

WORK FROM BOTANICAL
ARTISTS IN THE COLLECTION OF

DR SHIRLEY SHERWOOD OBE

CELEBRATING 25 YEARS
OF HER COLLECTION

WORK FROM BOTANICAL
ARTISTS IN THE COLLECTION OF

DR SHIRLEY SHERWOOD OBE

CELEBRATING 25 YEARS
OF HER COLLECTION

Jonathan Cooper
Park Walk Gallery

20 Park Walk London SW10 0AQ
t: +44 (0)20 7351 0410
mail@jonathancooper.co.uk
jonathancooper.co.uk

2



INTRODUCTION

This is a very special exhibition for me as it harks back to when I started collecting 25 years ago. I had a pile of paintings waiting to be hung and no good idea of how to do it and Jonathan offered to help me put them on the wall. His gallery became one of the few in London to show contemporary botanical art on a regular basis and I became a regular visitor to all his shows.

The artists here are special too. Many produced works that featured early in my collection and appeared in my first books, others are relatively new arrivals. They come from all over the world, as indeed does my collection.

Botanical art has been undergoing an extraordinary revival over the last 30 years with a large increase in numbers of artists participating in this renaissance, not only in Britain but worldwide.

I have acquired works from 33 countries and now have a total of over 900 paintings from 275 artists – so it was only possible for Jonathan to ask relatively few artists to take part in this show. There has been a wonderful response of some exceptional material, making it an exciting selection of current paintings of botanical art.

Will I go on collecting now that I've done so for a quarter of a century? This is a question I am often asked and a resounding 'Yes' is the answer when I am confronted with such lovely work.

Dr Shirley Sherwood OBE

4

Exhibiting artists	Page
BEVERLY ALLEN	6 – 7
FRANCESCA ANDERSON	8 – 9
SUSANNAH BLAXILL	10 – 11
PHANSAKDI CHAKKAPHAK	12 – 15
INGRID FINNAN	16 – 19
MONIKA DE VRIES GOHLKE	20 – 21
CORAL GUEST	22 – 23
SUE HERBERT	24 – 25
ANNIE HUGHES	26 – 29
MIEKO ISHIKAWA	30 – 33
KATE NESSLER	34 – 35
SUSAN OGILVY	36 – 39
RACHEL PEDDER-SMITH	40 – 43
BRYAN POOLE	44 – 47
ROSIE SANDERS	48 – 51
FIONA STRICKLAND	52 – 55
JESSICA TCHEREPNINE	56 – 59
CAROL WOODIN	60 – 63

SHIRLEY SHERWOOD OBE, MA (OXON) D.Phil.

Interested in plants and art since childhood, Dr Sherwood earned her undergraduate degree in botany from Oxford University and her D.Phil working in a team which discovered the important drug Tagamet.

She started the Shirley Sherwood Collection in 1990. Alongside curating exhibitions of works from her collection specially hung for the Shirley Sherwood Gallery, she has exhibited her collection in many other prestigious locations including the Smithsonian Institute in Washington, the Ashmolean Museum in Oxford, the Marciana Library in Venice and the Real Jardín Botánico Madrid. She has also written six books and many articles on botanical art.

The Sherwood family have all generously supported Kew with the building of the Shirley Sherwood Gallery of Botanical Art, the only purpose-designed botanical art gallery in the world. The gallery was opened in April 2008, and has between 2 – 3,000 visitors a week.

Awarded the OBE for services to botanical art in early 2012, Dr Sherwood is a Fellow of the Linnaean Society, was awarded the Veitch Memorial Medal by the Royal Horticultural Society and is an Hon. Fellow of St Anne's College, Oxford.

6

BEVERLY ALLEN



Born in Sydney, Australia, in 1945, Beverly has exhibited annually at the Royal Botanic Gardens Sydney 'Botanica' Exhibition since 1999 and internationally including New York, Washington, Chicago, Amsterdam, Tokyo, Kyoto and London. She was awarded a Gold Medal at the Royal Horticultural Society Show in London in 2007, the inaugural Gold Medal 2011 for Botanical Art at the New York Botanic Garden and the Silver Medal in 2014.

Her paintings are included in the Highgrove Florilegium for the Prince of Wales's Charitable Trust and in the collections of the Botanic Gardens Trust Sydney, the RHS Lindley Library, the Royal Botanic Gardens Kew, the Hunt Institute in Pittsburgh, and the Isaac and Alisa Sutton Collection.

"The Gyme Lily is indigenous to the Sydney basin, and an iconic plant on the coastline. The flower spike grows up to 5m high, and the sword-shaped leaves up to 2.5m long.

This is a majestic lily, striking in the landscape and sculptural in form. It is an extraordinary subject to explore in both structure and colour, which traverses the gamut of warmth; from palest pink through rose, scarlet, purple, burgundy and russet, offset by the sharpest lime of the stamens and stem bracts. This inflorescence is painted life size".

Gyme Lily (*Doryanthes excelsa*)

Watercolour on Arches paper
39 × 28 ins | 99 × 71 cm



Barney Blinn

8

FRANCESCA ANDERSON



Born in Washington DC in 1944, Francesca Anderson is an American artist known for her drawings in ink of botanical subjects and birds. She has had numerous one-person shows at venues including the New York Botanical Garden, Brooklyn Botanic Garden, the National Wildlife Federation, American Horticultural Society, New York Horticultural Society, the Arnold Arboretum of Harvard University, the New Mexico Museum of Natural History and Cheekwood Museum among others. Her drawings have appeared in scientific publications, and earned two Gold and one Silver-Gilt Medal from the Royal Horticultural Society. The Orchid Room at the “21” Club in New York was a commission that showcased her drawings.

Francesca is a long time trustee of Brooklyn Botanic Garden, and founder of Brooklyn Botanic Garden Florilegium Society. She is a Fellow of the Linnean Society of London.

“Milkweed is a common, native plant that grows in the fields of our farm on eastern Long Island, and is essential to the larvae of the Monarch butterfly”.

Milkweed (*Asclepias syriaca*)

Ink on paper
28¾ × 22⅞ ins | 73 × 58 cm



SUSANNAH BLAXILL

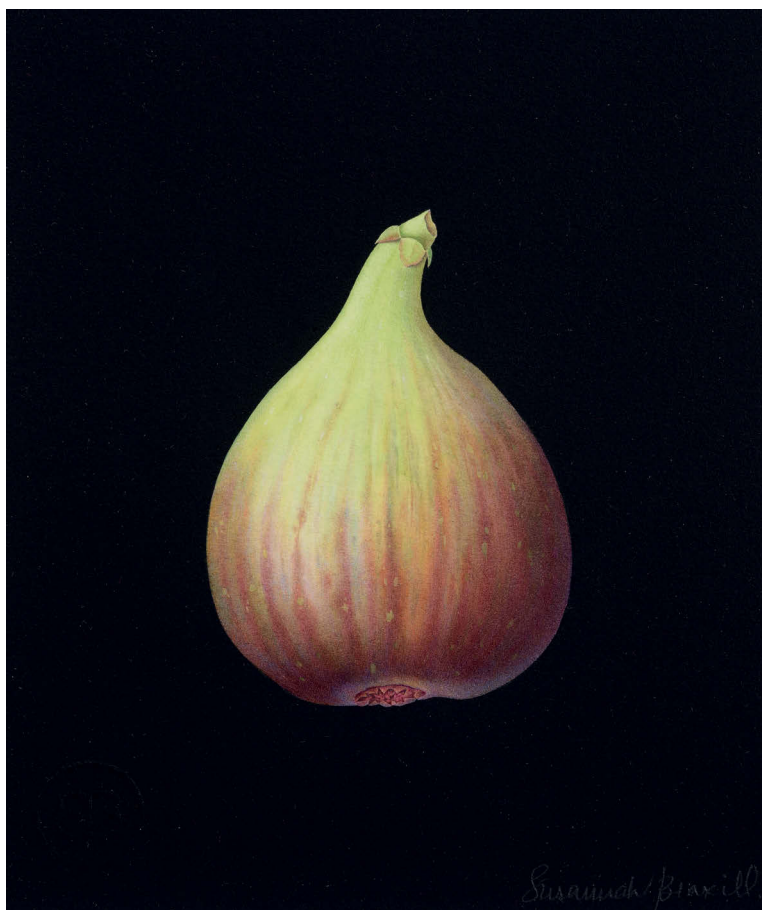


Susannah Blaxill was born in Armidale, New South Wales, Australia, in 1954 and educated in Australia. She left Australia for the UK in 1976 where she completed her university under-graduate degree and post graduate studies, before beginning painting full time in 1986. In 1993 Susannah returned to live permanently in Australia, where she continues to paint and teach. The majority of Susannah's work is commissioned and includes work in pencil, charcoal and watercolour.

“Painting on black backgrounds is fascinating both because of the technical challenge of executing this type of work, and also because of the opportunity it provides for creating subjects that are very intense. The dark background and lighter subject imparts an interesting tension, creating an illusion that the subject is disappearing a little into its surrounds, such as in this painting of the common fig”.

Fig on a Black Background (Ficus carica)

Watercolour and gouache over pencil on Schoellershammer paper
5 $\frac{1}{8}$ × 4 $\frac{3}{8}$ ins | 13 × 11 cm



PHANSAKDI CHAKKAPHAK



Born in Sriracha, Chonburi, Thailand, in 1949, Phansakdi Chakkaphak studied at Chulalongkorn University, Bangkok, and the University of Illinois at Chicago. He has designed and illustrated many publications on botanical art. His work has been exhibited in numerous group shows in Bangkok, San Francisco, and New York, and was the subject of a solo exhibition, *Beauty in Bloom*, at the Bangkok Art and Culture Centre, 2009. His paintings are included in private and corporate collections worldwide.

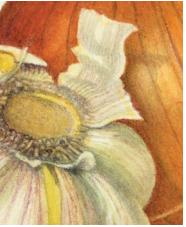
Caribbean Jewels Sapphire Blue (*Scilla peruviana*)

Watercolour on Fabriano paper
20½ × 15 ins | 52 × 38 cm



14

PHANSAKDI CHAKKAPHAK



Onion and Garlic (*Allium cepa* & *Allium sativum*)

Gouache on Fabriano paper
10³/₈ × 15 ins | 26.25 × 38 cm



Dhansakdi Chakraprak
July 24, 2017

INGRID FINNAN

Born in 1944 in Poland, and now residing in New York City, Ingrid Finnan worked for 30 years as a designer of decorative textiles until retirement in 2005, at which time she discovered contemporary botanical art. She was immediately drawn to the art and chose to paint in oils after a lifetime of admiration of the Dutch floral painters of the 17th Century. Since 2006, she has shown annually in the International American Society of Botanical Artists Exhibitions and many other juried exhibitions. Her work is included in a number of private collections.

Amaryllis, 2014 (Hippeastrum c. "Aphrodite")

Oil on gesso prepared 600gsm Fabriano Artistico
17 $\frac{1}{8}$ × 21 $\frac{1}{8}$ ins | 43.5 × 53.5 cm



INGRID FINNAN



"I thought to capture the Amaryllis and the Tulips in a unique way by showcasing them on painted grounds – an ombrée for the Amaryllis and a framed window effect for the Tulips - while still maintaining the botanic accuracy of both subjects".

Red Tulips, 2014 (Tulipa cv.)

Oil on gesso prepared 600gsm Fabriano Artistico paper
17³/₈ × 13 ins | 44 × 33 cm



MONIKA DE VRIES GOHLKE



Monika de Vries Gohlke was born in 1940 in Berlin, Germany. She now resides in New York, USA, where she studied art and Graphic Design at the Parsons School of Design and the Brooklyn Museum Art School.

For many years she worked for Polo/Ralph Lauren and Williams/Sonoma designing textiles, home furnishings and dinnerware. She began focusing on botanical subjects for her art because she is awed, intrigued and seduced by the infinite mystery, power and beauty of nature. As a member of the American Society of Botanical Art, the Guild of Natural Science Illustrators and the Brooklyn Botanic Garden Florilegium Society she has exhibited at many venues engaged with the natural world, such as the New York Botanic Garden, Kew Gardens, UK, the Berlin Botanic Garden, Germany, the Brooklyn Botanic Garden, New York and the Horticultural Society, New York.

She has received numerous awards and her work has been acquired by many private and public collections, notably the Metropolitan Museum of Art, NY, the State Museum in Albany, the National Museum of Women in the Arts, Washington, DC, the Brooklyn Botanic Garden, and the Isaac Sutton Collection in NY.

“This specimen of “Cucurbita” was grown in the Herb Garden of the Brooklyn Botanic Garden - my own Brooklyn backyard garden is too small to accommodate a plant of such voracious proportions”.

Pumpkin (Cucurbita)

Hand-coloured aquatint etching, printed Chine-Collé
 Sheet size: 30 × 22 ins | 76.2 × 55.88 cm (plate size: 18 × 12 ins | 45.72 × 30.48 cm)





CORAL GUEST

Born in 1955, Coral Guest studied Fine Art (Painting) at Chelsea College of Art and Design. She was awarded the Chelsea Drawing Scholarship in 1975 and the Chelsea Travel Scholarship in 1977. Her work as a Flower Painter began in 1979, whilst studying the art of calligraphy in Japan. She has been awarded 2 gold medals by the RHS. Her life size images of plants are created in a large format, painted directly from observation, and specialise in the inflorescence produced from bulb, corm, and tuber.

“Painted seasonally from observation, each June/July from 2006 to 2014, the work represents a total of eleven cultivars of *Paeonia lactiflora* that are all part of the magenta colour sphere. The work is a visual chart of Coral Guest’s own phenological data that has been accumulated over 9 years and is a chronicle of the yearly first flowering of the French Heritage Peonies in her personal collection. Each cultivar is painted at its point of perfection and optimum growth. Each bloom is a result of the specific year in which it was painted and the work includes the weathering effects of that year, such as the influence from frost, rain and hail, sun blanching and early petal fall”.

Date Painted and the Name of the *Paeonia Lactiflora*:

LEFT COLUMN FROM TOP TO BASE:

2013 'Pottsi Plena' (Calot 1857)
2011 'General McMahon' (Calot 1867)
2007 'Felix Crousse' (Crousse 1881)

CENTRAL COLUMN FROM TOP TO BASE:

2014 'Edulis superba' (Limoine 1834)
2012 'L'Eclatante' (Calot 1860)
2010 'Adolph Rousseau' (Dessert & Mechin 1890)
2008 'Francois Ortegat' (Parmentier 1850)
2006 'Mons Martin Cahuzac' (Dessert 1899)

RIGHT COLUMN FROM TOP TO BASE:

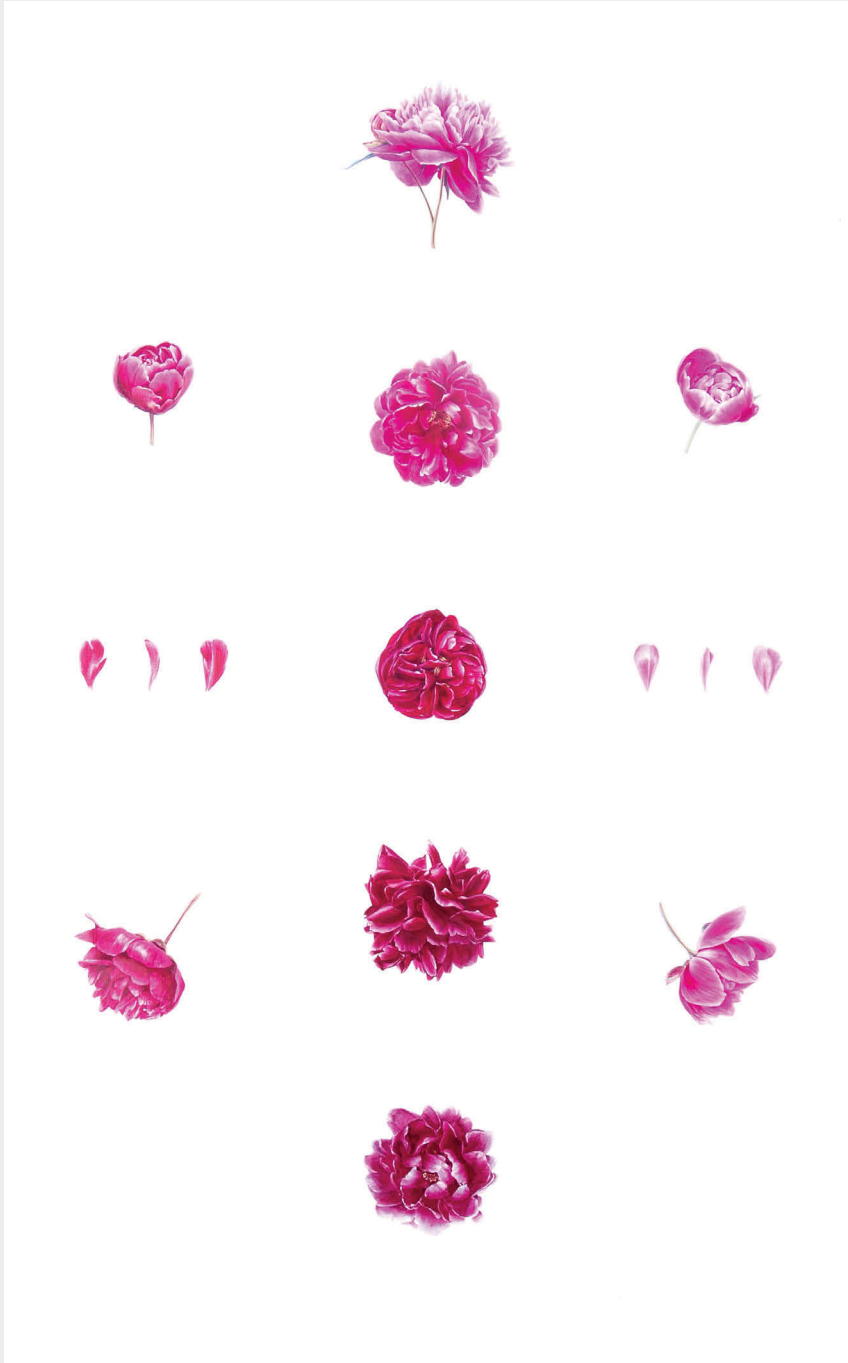
2013 'Mme Ducl' (Mechin 1880)
2011 'Mme Boulanger' (Crousse 1886)
2009 'Modeste Guerin' (Guerin 1845)

The Phenology Cabinet of the Incandescent Petal

Series I Magenta Cultivars of *Paeonia Lactiflora* from 19th Century France

Acrylic on canvas

60¼ × 40⅞ ins | 153 × 102 cm



SUE HERBERT

Born in Darwen, England, in 1954, Sue Herbert trained at Blackpool College of Art and Technology and Sunderland College of Art. Her work has been included in many group exhibitions in London, and the Hunt Institute in Pittsburgh, the Denver Art Museum, and the Smithsonian.

**Water Lily with Broken Stem**

Watercolour on paper
28 $\frac{1}{4}$ × 18 $\frac{3}{4}$ ins | 72 × 48 cm



Water lily (Nymphaea) - 2001

25



ANNIE HUGHES

Born in 1948 in Santiago, Chile, Annie Hughes moved to Australia in 1966. In 1972 she left to spend 12 years in UK, where she obtained a diploma in Art & Design, before returning to Australia and earning a bachelor's degree with First Class Honours in 1990. Having worked as a textile designer for fifteen years, she turned to botanical art in 2005. She has won many awards, winning Gold in the RHS Botanical Art Show in London in 2011, 2012, and 2013, and BISCOT Edinburgh, 2014 (Gold). She continues to live and work in Australia, exhibiting her paintings, and occasionally teaching. Her work is held in many collections, including the Hunt Institute, Lindley Library, and private collections in Australia, the UK, and Japan.

"Banksia: A striking Banksia from Western Australia, the flowers are red in bud and open progressively from the bottom giving it a strong two- tone effect, the seed heads have a cross-hatch pattern that is very distinct to that species".

Banksia (Banksia menziesii)

Watercolour on Arches paper
22 $\frac{1}{8}$ × 17 $\frac{3}{4}$ ins | 56 × 45 cm



28

ANNIE HUGHES

“Peony and buds: The entire Peony plant is poisonous specially the flowers, however the roots are used as an Antispasmodic, Astringent, Diuretic, Sedative, and Emmenagogue, cultivated Peony is also used as a Blood Tonic”.



Peony and Buds (*Paeonia officinalis*)

Watercolour on Fabriano 5
15 × 18½ ins | 38 × 46 cm



MIEKO ISHIKAWA



Born in Tokyo, Japan, in 1950, Mieko Ishikawa graduated from Musashino Art University. Initially working as an illustrator, in recent years she has increasingly focused on botanical art, alongside her teaching. She has had several solo shows at the Tama Forest Science Garden, Hachioji, Tokyo, the U. S. National Arboretum, Washington D.C., and the Embassy of Japan, Information and Culture Center, Washington D.C. Her work is held in the Hunt Institute, the Lindley Library, Royal Horticultural Society, London, the Prince's Charities Foundation, England, the Royal Botanic Gardens, Kew, and the Flower Museum, Chiba. She was awarded a Royal Horticultural Society Gold Medal, 2006, and is a member of the Japanese Association of Botanical Illustration, Hunt Institute Associates, the Guild of the Asian Botanical Artists, and the American Society of Botanical Artists.

"Nepenthes villosa is very attractive species which grows naturally on Mount Kinabalu on the island of Borneo, Malaysia, between 2,340m and 3,240m. I have climbed Mount Kinabalu twice, allowing me to discover the Nepenthes villosa. A carnivorous-plant, in my painting it has captured an insect in its pitcher".

Nepenthes villosa

Watercolour on vellum
26 × 19¼ ins | 66 × 49 cm



MIEKO ISHIKAWA



“Prunus mume ‘Kenkyou’ (Armeniaca mume): Crossed with the apricot, Prunus mume ‘Kenkyou’ has a large flower whose petal is at first a pale pink colour, later turning white. ‘Kenkyo’ is Japanese for “I saw the flower, and was surprised”, meaning that the viewer is surprised by its size”.

Prunus mume ‘Kenkyou’ (Armeniaca mume)

Watercolour on Fabriano paper
16³/₈ × 12¹/₈ ins | 41.5 × 30.5 cm





KATE NESSLER

Kate Nessler was born in Saint Louis Missouri, USA, in 1950, and lives and works in Arkansas, USA. Her work is included in international permanent collections, including; Highgrove Florilegium Prince of Wales's Charitable Foundation, London, the Royal Horticulture Society, London, the National Museum of Women in the Arts, Washington, DC, and the Hunt Institute for Botanical Documentation, Pittsburgh, PA. Having trained at the Kendall School of Design, Michigan, USA, Nessler has gone on to win many awards including; three Royal Horticultural Society Gold Medals and the Award of Excellence for the Outstanding Botanical Artist at the American Society of Botanical Artists.

Bluff Dweller (*Carex eburnea*)

Watercolour on vellum
17 × 11 ins | 43.18 × 27.94 cm



35



SUSAN OGILVY

Born in 1948 in Kent, England, Susan Ogilvy has lived for many years in Somerset. She has had seven one man shows at Jonathan Cooper's gallery and has participated in many other joint exhibitions. She holds the RHS Gold medal. Her work is included in many public and private collections as well as the Shirley Sherwood collection, including the Hunt Institute, Pittsburgh; the Isaac and Alisa Sutton collection; the Florilegium of the Royal Botanic Garden, Sydney and the Highgrove Florilegium created under the auspices of the Prince's Charitable Trust. Three of her paintings have been selected for inclusion in the Transylvania Florilegium presently being created under the umbrella of the Prince's School of Traditional Arts to record in a permanent way the flora of Transylvania.

She designed and illustrated *Overleaf*, a book on British trees published in 2013 by Kew.

Corinthian Capital (*Acanthus mollis latifolius*)

Watercolour on Arches paper
29 $\frac{7}{8}$ × 21 $\frac{7}{8}$ ins | 76 × 55.5 cm



38

SUSAN OGILVY



Thrush's Nest

Watercolour on Arches paper
11⁵/₈ × 14⁵/₈ ins | 29.5 × 37 cm





RACHEL PEDDER-SMITH

Born in 1975, Rachel Pedder-Smith studied at Leeds Metropolitan University before gaining an MA and PhD in Natural History Illustration from the Royal College of Art. She has been awarded four Gold Medals from the Royal Horticultural Society, has had three solo shows in London and numerous group exhibitions. Her paintings are included in many notable collections, including the Alisa and Isaac Sutton Collection, the Hunt Institute for Botanical Documentation and the Lindley Library.

Four Pink Flowers

Watercolour on Arches 640gsm
5 1/2 × 7 5/8 ins | 14 × 19.5 cm



42

RACHEL PEDDER-SMITH



Leaves

Watercolour on Arches 640gsm
3¾ × 21½ ins | 9.5 × 54.5 cm



BRYAN POOLE

Botanical and natural history artist Bryan Poole was born in New Zealand in 1953, and has been working in the United Kingdom since the early 1980s. He is a Member of the Royal Society of Painter-Printmakers (RE) and a RHS (Royal Horticultural Society) Gold Medal winner. His work is true to the 17th-century intaglio etching technique to which he brings a strong, contemporary, graphic feel. He is a Kew Gardens trained “modern classicist” and Chelsea Flower Show perennial, and his work is included in the Natural History Museum, London, the National Museum of Natural History, Smithsonian Institution, and the Museum of New Zealand.

Cardoon (*Cynara cardunculus*)

Copper etching with watercolour

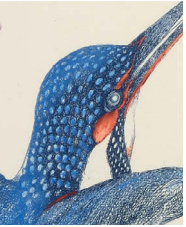
Sheet size: 28³/₄ × 21⁵/₈ ins | 73 × 55 cm (plate size: 13 × 11¹/₈ ins | 33 × 28 cm)

Artist's proof. From an edition of 100 plus 7 artist's proofs



46

BRYAN POOLE



Kingfisher and Angels Fishing Rods (*Alcedo atthis* & *Dierama pendulum*)

Copper aquatint and etching with iridescent watercolour finish

Sheet size: 29¹/₈ × 22¹/₈ ins | 74 × 56 cm (plate size: 23¹/₂ × 17¹/₄ ins | 60 × 44 cm)

Artist's proof. From an edition of 70 plus 7 artist's proofs





ROSIE SANDERS

Rosie Sanders was born in Stoke Poges, Buckinghamshire, England, 1944, and lives and works in Devon. A member of the Linnean Society, she has won several awards including the Royal Academy Miniature Award in 1985 and five Royal Horticultural Gold Medals. Her work has been exhibited in the Hunt Institute and numerous solo shows in London, and she has been commissioned to paint flowers for HM Queen Elizabeth II, HM the Queen Mother, and the RHS. In 2010 she wrote and illustrated *The Apple Book*, published by Frances Lincoln.

Greater Knapweed (*Centaurea scabiosa*)

Watercolour on Arches 640gsm
40 $\frac{1}{8}$ × 27 $\frac{1}{2}$ ins | 102 × 70 cm



50



ROSIE SANDERS

"Greater Knapweed and Viper's Bugloss grow on the shingle in the same habitat. They are lovely at Slapton Ley, a rather special site on the south Devon coast".

Viper's Bugloss (*Echium vulgare*)

Watercolour on Arches 640gsm
40 $\frac{1}{8}$ × 27 $\frac{1}{2}$ ins | 102 × 70 cm





FIONA STRICKLAND

Born in 1956, in Edinburgh, Fiona Strickland is a Graduate and Post Graduate of Edinburgh College of Art. She is a multi award winner, including the Society of Botanical Artists, R.H.S. Gold Medallist, a member of the American Society of Botanical Artists, master class tutor at The Royal Botanic Gardens, Edinburgh, Post Graduate Certificate of Education, Art and Design, course tutor for the Society of Botanical Artists Distance Learning Diploma Course, and recipient of the Dawn Jolliffe Botanical Art Bursary awarded by the Royal Horticultural Society. Her paintings are held in the R.H.S Lindley Library, the Hunt Institute for Botanical Documentation and numerous private collections in the UK, Europe and the USA.

Papaver (Papaver orientale)

Watercolour on Fabriano Artístico HP 640gsm
23⁵/₈ × 31¹/₂ ins | 60 × 80 cm



FIONA STRICKLAND



“Oriental poppies are flamboyant early summer flowers and the sight of the sunlight on the delicate petals elicits such a strong emotional response that I am compelled to record them. A recurring theme in my work and usually viewed from an unexpected angle I love to reveal their character when the sun shines through their petals, enhancing their colour, form and surface texture, all hugely fascinating to paint”.

Oriental poppy (Papaver orientale)

Watercolour on Fabriano Artistico HP 640gsm
23⁵/₈ × 19³/₄ ins | 60 × 50 cm



JESSICA TCHEREPNINE



Jessica Tcherepnine is a self-taught botanical artist. She has painted flowers all her life, loving the detailed observation this requires. She has had solo exhibitions in London, New York, Paris, and Palm Beach, Florida, and has been included in numerous group exhibitions. She has won two Gold Medals at the Royal Horticultural Society. Jessica is a founding member of the American Society of Botanical Artists. She has been invited to paint for the Highgrove Florilegium, Filoli Florilegium, and Brooklyn Botanic Garden Florilegium. She is represented in collections internationally, including those at the Hunt Institute for Botanical Documentation, in Pittsburgh; the British Museum (Natural History), Royal Horticultural Society, Lindley Library, and the Benois Family Museum, Peterhof, St. Petersburg, Russia.

Bulrushes (*Typha latifolia*)

Watercolour on Fabriano Artistic
20⁷/₈ × 11¹/₈ ins | 53 × 28 cm



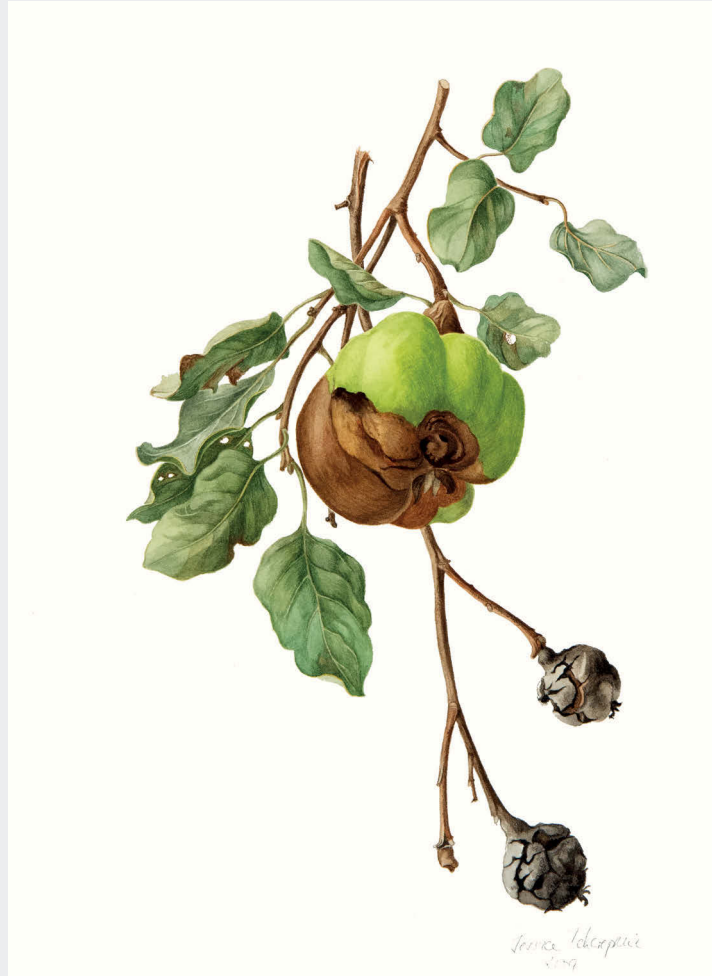
58

JESSICA TCHEREPNINE



Quince (Cydonia Oblonga)

Watercolour on Fabriano Artistic
9½ × 6¼ ins | 24 × 16 cm





CAROL WOODIN

Specialising in rare plants in watercolour on vellum, Carol Woodin was born in Salamanca, New York, USA, in 1956. Her work has been exhibited worldwide, recently at the Museo della Grafica, Pisa, Italy, Santorini Biennale of Arts, Greece, and UBS Gallery, New York. Her work is included in the collections of the Royal Botanic Gardens, Kew, the Smithsonian National Museum of Natural History, and the Alisa and Isaac M. Sutton Collection. A recipient of a Royal Horticultural Society Gold Medal (1995), the 1998 ASBA Diane Bouchier Award, and the Lankester Award for Orchid Art (2013), she served on the Board of the American Society of Botanical Artists, and is now its Director of Exhibitions.

Phormium sp.

Watercolour on vellum over panel
12³/₄ × 16 ins | 32.4 × 40.6 cm



CAROL WOODIN



"This is a rare, epiphytic cloud forest orchid from the tropical Americas. Its flowers mimic insects in order to attract pollinators, Tachinid flies. Even though orchids are some of the most ancient plants on earth, it is believed that many Telipogon species have evolved since the last ice age. Telipogons are difficult to cultivate due to their specific requirements of constant air movement, high moisture and cool temperatures".

Telipogon hutchinsonii

Watercolour on vellum over board
14½ × 11⅞ ins | 36.83 × 28 cm



64



Jonathan Cooper
Park Walk Gallery

20 Park Walk London SW10 0AQ
t: +44 (0)20 7351 0410
mail@jonathancooper.co.uk
jonathancooper.co.uk

Jonathan Cooper
Park Walk Gallery