



JANE WORMELL

**new works from
my garden**

JANE WORMELL
new works from
my garden

JONATHAN COOPER
20 Park Walk London SW10 0AQ
t: +44 (0)20 7351 0410
mail@jonathancooper.co.uk
jonathancooper.co.uk



Euphorbia, Macleaya, lilies, 2020

Oil on linen 39.37 × 55.12 ins (100 × 140 cm)

£7,800



Foxgloves, Ammi, Chocolate Cosmos, 2020

Oil on linen 39.76 × 29.92 ins (101 × 76 cm)

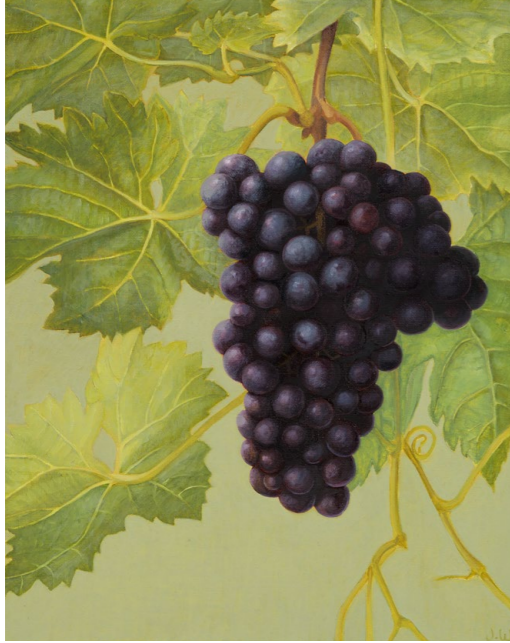
£4,200



Foxgloves, 2020

Oil on linen 31.50 × 23.62 ins (80 × 60 cm)

£3,800



Black Grapes, 2020

Oil on linen 11.81 × 9.45 ins (30 × 24 cm)

£1,400



Blackberries, Early Autumn, 2020

Oil on linen 19.69 × 27.56 ins (50 × 70 cm)

£3,200



Anemones, 2020

Oil on linen 18.11 × 13.78 ins (46 × 35 cm)
£2,200



Late Summer Flowers, 2020

Oil on linen 23.62 × 27.56 ins (60 × 70 cm)
£3,800



Blackberry Hedge, 2020

Oil on linen 16.14 × 22.05ins (41 × 56 cm)

£2,400



Lilies, Echinacea and Daisies, 2020

Oil on linen 36.25 × 28 ins (92.1 × 71.1 cm)

£4,000



Nasturtiums, 2020

Oil on linen 17.91 × 14.17 ins (45.5 × 36 cm)

£2,200

Black eyed Susan (Thunbergia) and Nasturtium Leaves, 2020

Oil on linen 27.56 × 19.69 ins (70 × 50 cm)

£3,200





Foxgloves Under The Hedge 2, 2020

Oil on linen 15.75 × 23.62 ins (40 × 60 cm)

£2,400



Foxgloves with Flowering Brambles, 2020

Oil on linen 15.75 × 22.05 ins (40 × 56 cm)

£2,400

Amongst the sunflowers, 2020

Oil on linen 40.08 × 32.09 ins (101.8 × 81.5 cm)

£4,200





Oxeye Daisies, 2020

Oil on board 7.87 × 11.81 ins (20 × 30 cm)

£1,400



Sea Kale on the Single, 2020

Oil on board 7.87 × 11.81 ins (20 × 30 cm)

£1,400



Flowering Brambles, 2020

Oil on linen 7.28 × 9.45 ins (18.5 × 24 cm)

£1,200



Summer Garden I, 2020

Oil on linen 16 × 20 ins (41 × 51 cm)

£2,400

JANE WORMELL

- 1960 Born UK
- 1982-91 Group Exhibition at The Highgate Gallery, London
- 1984-87 Group Exhibition at The Mall Galleries, London
- 1985 Solo Exhibition at Ken Spelman, York
- 1986 Solo Exhibition at The University of York
- 1987-91 Group Exhibition at The Pheonix Gallery
- 1988-91 Group Exhibition at The Country Life Gallery
- 1990 Group Exhibition at The Barbican Gallery, London
- 2013 Royal Academy Summer Exhibition, London
- 2015 Exhibited at The London Art Fair, Islington
- Exhibited at BADA Art & Antiques Fair, London
- 2016 Exhibited in mixed exhibition New Year, New Art, Jonathan Cooper, London
- Exhibited at BADA Art & Antiques Fair, London
- Exhibited in Green and Pleasant Land, Jonathan Cooper, London
- 2017 Exhibited in New Year New Art, Jonathan Cooper, London



JONATHAN COOPER