

Jonathan Cooper

20 Park Walk London SW10 0AQ

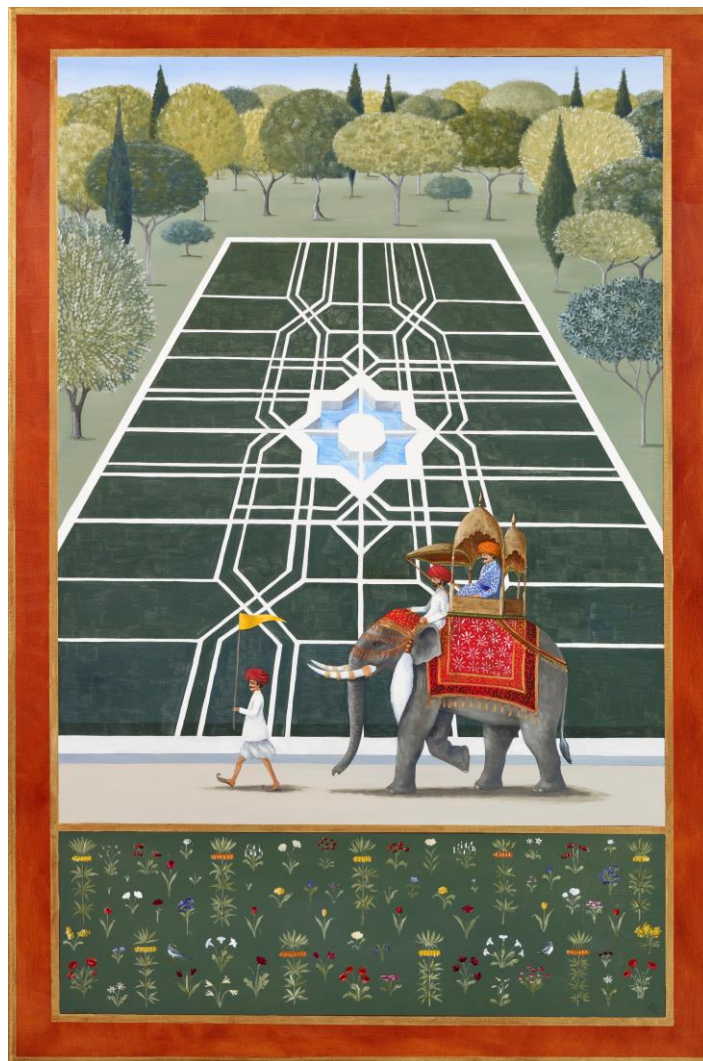
Press Release

**REBECCA CAMPBELL**

**GARDENERS' WORLD**

**1st – 17th October 2020**

*One who plants a garden, plants happiness - Chinese Proverb*



*The Maharajah and the Mahoot, oil on linen, 35.8 x 24ins (91 x 61cm)*

This October contemporary artist Rebecca Campbell will be returning to Jonathan Cooper, Chelsea, with an exhibition of 24 new paintings celebrating our enduring fascination with gardens, and the solace and joy that they provide.

[press@jonathancooper.co.uk](mailto:press@jonathancooper.co.uk) | +44 (0)20 7351 0410

Jonathan Cooper

20 Park Walk London SW10 0AQ

*Not only is gardening an obsession, it has seeped into our soul – Rebecca Campbell*



*Dutch Gold*, oil on linen, 30.25 x 24ins (77 x 61cm)

*Gardeners' World* will be an imaginative journey across cultures and time, exploring our obsession with gardens in their myriad forms, from the original paradise of the Garden of Eden to the respite from modern life offered by rooftop urban gardens. Drawing on the artist's childhood memories of Irish walled gardens, and those glimpsed during her many travels, these paintings are characterized by Campbell's signature warmth and humour, and richly detailed style. Whether depicting tulip mania of the Dutch Golden Age, or the meditative calm of a Zen garden, these paintings capture the care and love with which gardens have been curated and cultivated throughout history.

## NOTES TO EDITORS

**Rebecca Campbell** (b.1965, in Stamford, Lincolnshire) lives and works in South London having trained at the City and Guilds of London Art School. In addition to solo shows at Jonathan Cooper, Campbell has also exhibited in Mexico City, San Francisco, Houston, and Toronto. She has developed a highly imaginative pictorial language, taking influences from Indian Mughal miniatures, Persian textiles, and medieval tapestries to create her own unique decorative style. In 2015 she was chosen to be Elephant Family's Official Artist of the year, and continues to be closely involved with the charity. Other recent commissions have included Bicester Village, Holland Park Opera and Globe Trotter.



*Life is Complete (If you have a garden and a library, you have everything you need – Cicero)*  
oil on linen, 24 x 35.8ins (61 x 91cm)

**Jonathan Cooper** - founded in 1988 - is a London based contemporary art gallery specialising in representational drawing, painting, photography and sculpture. The gallery is a member of SLAD (The Society of London Art Dealers), BADA (The British Antique Dealers' Association) and LAPADA (The Association of Art & Antique Dealers), and regularly exhibits at international art fairs.