

Jonathan Cooper 30 Years

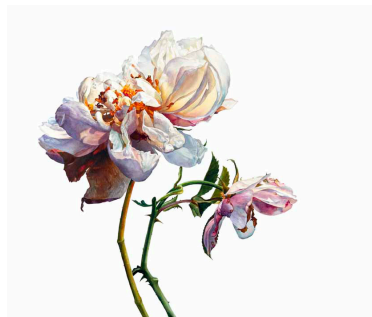
12 - 21 July 2018

Park Walk - Chelsea, London

Est. 1988



1.



2.



3.

To mark the 30th Anniversary of Jonathan Cooper, the gallery is proud to present *Jonathan Cooper: 30 Years*, a group exhibition celebrating the best of contemporary figurative painting, drawing and sculpture.

This milestone exhibition, showcasing thirty international artists represented by the gallery, highlights Jonathan Cooper's continued passion to discover and promote artists demonstrating a new viewpoint within the genres of wildlife, botanical, landscape and still life.

I am driven by a continued desire to nurture today's contemporary figurative masters and discover those of tomorrow.

- Jonathan Cooper

Over 30 years, Jonathan Cooper has played an important role in developing the careers of many of today's figurative greats, including internationally acclaimed botanical artist Rosie Sanders, BP Portrait Award Winner Craig Wylie and wildlife artist Gary Stinton.

The gallery has also been host to some major exhibitions, including; *Work from botanical artists in the collection of Dr Shirley Sherwood* in 2015, an exhibition in conjunction with Dr Shirley Sherwood OBE, which drew together works by contemporary botanical artists held in Dr Sherwood's comprehensive botanical collection, the largest in the world.

Jonathan Cooper: 30 Years brings together artists from Australia, Canada, China, France, Russia, UK and the USA. These include; botanical artists Rosie Sanders, Fiona Strickland and Kate Nessler, wildlife artists Gary Stinton, Marzio Tamer and Ron Kingswood, alongside painters Craig Wylie, James Lynch, T. Allen Lawson, David Grossmann, Nicholas Phillips, Geneviève Daël, Ben Henriques and ceramist Georgina Warne.

For more information or images please contact Alice Phillimore at alicephillimore@gmail.com or on +44(0) 207 351 0410

Notes to Editors

A selection of the works included in *Jonathan Cooper: 30 Years* will be previewed at Masterpiece, London (28 June - 4 July 2018) before moving to the gallery.

masterpiecefair.com

Image details

Image 1. Georgina Warne, *Anniversary Curlew*, high fired earthenware, 54 x 39cm x 19.5cm

Image 2. Rosie Sanders, *It was the time of roses*, watercolour on Arches 640gsm paper, 102 x 124cm

Image 3. Ron Kingswood, *First Light*, oil on canvas, 122 x 122cm

More images below

Listing Information

Jonathan Cooper Gallery, 20 Park Walk, Chelsea, London, SW10 0AQ

jonathancooper.co.uk

+44 (0) 20 7351 0410

Gallery Opening Times

Mon – Fri (10 – 6.30pm); Sat (11 – 4pm)

Closed Bank Holidays

Free Admission

Social

#jonathancooper30years

Instagram: @jonathancoopergallery

Twitter: @JCooperGallery

Facebook: @jonathancooperparkwalkgallery

Jonathan Cooper Gallery - founded in 1988 - represents exceptional living artists working internationally in traditional techniques, specialising in figurative painting, drawing and sculpture. The gallery is a member of SLAD (The Society of London Art Dealers), BADA (The British Antique Dealers Association) and LAPADA (The Association of Art & Antique Dealers), and regularly exhibits at international art fairs including Masterpiece, London.

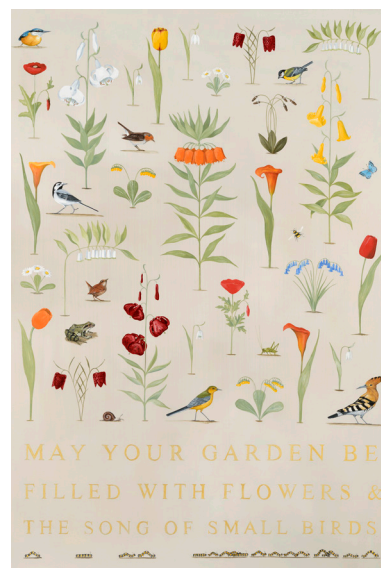
Dr Shirley Sherwood OBE is a British botanist, writer and philanthropist. Her extensive collection of botanical art from over two hundred artists, documents the emergence of a new wave of botanical artists and the renaissance of their art form. The Shirley Sherwood Gallery of Botanical Art opened in 2008 in Kew Gardens and is the first gallery dedicated solely to botanical art, displaying the works of living artists from the collection of Dr Shirley Sherwood OBE alongside the Garden's holdings.



T. Allen Lawson
Winter Blueberries
Oil on panel
50.8 x 121.9cm



James Lynch
The longleat Hare
Egg tempera on gesso
coated wood panel
74 x 130cm



Rebecca Campbell,
An Army of Caterpillars
Oil on linen, 100 x 70cm